

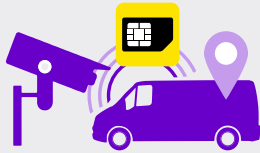
Industry: Automotive

## Smart Security: Tracking and Alarm Systems

**Protecting vehicles from theft is crucial in the automotive industry.**

Advanced GPS trackers with engine immobilisation and comprehensive vehicle alarm systems offer an effective solution. These systems provide real-time vehicle location data through GPS, using FUSION IoT SIM cards for reliable communication.

The GPS tracker sends position updates to the owner, ensuring precise location tracking. The vehicle alarm system uses bluetooth sensors to monitor vehicle disturbance providing visual and acoustic alerts for any break-in attempts, and sending notifications via calls or SMS to the owner.



### Customer Challenges

**Functionality across UK and Europe.**

**Adherence to high security standards.**

**Reliable and fast communication between the vehicle and owner.**

**Addressing theft of entire vehicle or individual parts, such as batteries or wheels.**

### Solution Requirements

Ensure seamless connectivity across all national networks.

**EU Coverage:**

Reliable operation if vehicle is taken abroad.

**Fail-Safe Solution:**

Continuous, uninterrupted service.

**Controllable Costs:**

Predictable and manageable expenses.

**Fast Support:**

Quick and effective customer support.

### Solution Details

**Network:**

Single & Multi-Network SIM available.

**Data plans:**

We have a range of flexible data plans with options for multi-network and single-network SIMs as well as data pooling available for efficient usage across multiple devices and territories.

**Number of SIM cards:**

Ranging from a single SIM solution, to catering for SMEs and Enterprise alike. The portal allows provision and in-life management with no minimum requirement.

**Minimum contract duration:**

As required.

### Customer Benefits

**Immediate Alerts for Break-Ins/ Theft:**

Receive prompt notifications to act quickly.

**Prevention of Theft and Break-Ins:**

Effective measures to deter theft and unauthorised access.

**Real-Time Vehicle Location:**

Easily track the vehicle's location at any time.

**Enhanced Recovery Chances:**

Accurate location data increases the likelihood of recovering stolen vehicles or parts.

**Prevention of Theft and Break-Ins:**

Effective measures to deter theft and unauthorized access.

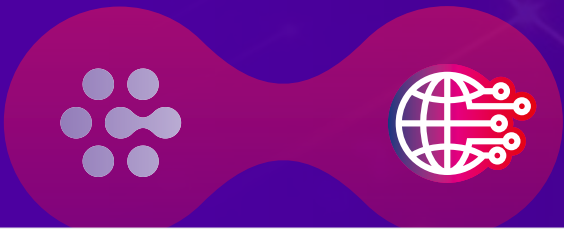
## Ready to enhance your vehicle's security?

Contact us today to discover how FUSION IoT can enhance your vehicle tracking and alarm systems, offering reliable data connectivity for superior protection and peace of mind during your travels.

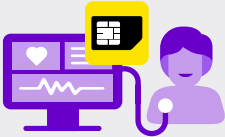
**[sales@gammacommunications.nl](mailto:sales@gammacommunications.nl)**  
**088 500 5010**







Industry: Healthcare & GP Surgeries

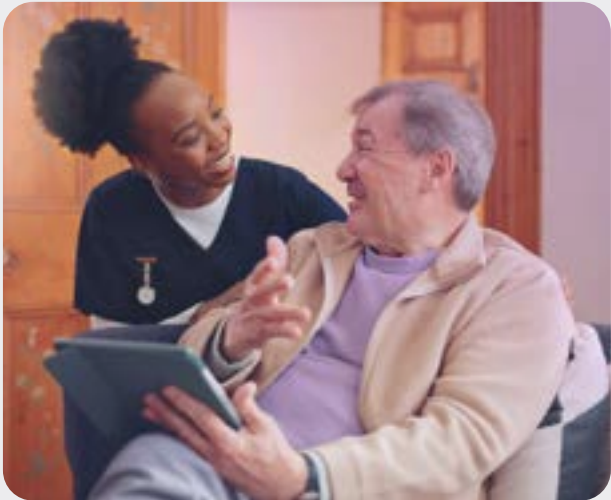


## Smart Healthcare: Mobile Care

**Providing efficient and flexible healthcare services requires advanced technology solutions.**

Tablets and laptops equipped with specialised software help optimise pharmacy workflows by enabling tasks such as capturing patient data, processing prescriptions, and managing orders.

These devices, integrated with FUSION IoT SIM cards, support pharmacists and healthcare professionals in delivering services both within the pharmacy and in remote or segmented areas.



### Customer Challenges

**Limited Flexibility:**  
Difficulty in providing healthcare services across various settings.

**Restricted Access to Information:**  
Challenges in quickly accessing health-related information.

**Time-Consuming Consultations:**  
Extended time required for patient consultations and service delivery.

**Error-Prone Data Entry:**  
High risk of errors in manual data collection.

### Solution Requirements

**All Networks in the UK:**  
Ensure seamless connectivity across all national networks.

**Dynamic Pooling:**  
Adapt resources based on varying demands and usage patterns.

**IMEI-Lock:**  
Secure devices against unauthorised use and misuse.

### Solution Details

**Network:**  
Single & Multi-Network SIM available.

**Data plans:**  
We have a range of flexible data plans with options for multi-network and single-network SIMs as well as data pooling available for efficient usage across multiple devices and territories.

**Number of SIM cards:**  
Ranging from a single SIM solution, to catering for SMEs and Enterprise alike. The portal allows provision and in-life management with no minimum requirement.

**Minimum contract duration:**  
As required.

### Customer Benefits

**Faster Data Capture and Management:**  
Quickly and efficiently manage patient data and other critical information.

**More Efficient Prescription and Order Processing:**  
Streamline the handling of prescriptions and orders, enhancing overall productivity.

**Enhanced Access to Information:**  
Improve staff access to essential health information and resources.

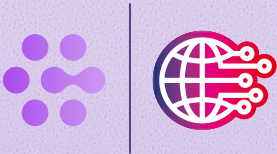
**Reduced Data Entry Errors:**  
Minimise errors associated with manual data entry through automated processes.

**Improved Service Quality:**  
Provide better customer service through faster, more accurate processing and support.

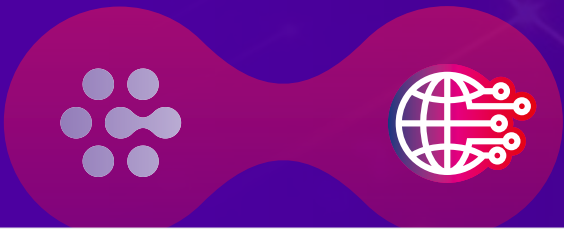
## Ready to elevate your healthcare service delivery?

Contact us today to explore how FUSION IoT connectivity can enhance your operations, improve efficiency, and deliver superior patient care.

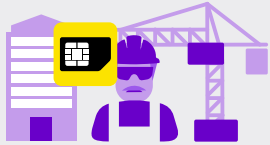
**[sales@gammacommunications.nl](mailto:sales@gammacommunications.nl)**  
**088 500 5010**







Industry: Construction



# Smart Construction: Single and Multi-Site Connectivity

**Providing reliable internet access on construction sites is crucial for efficient operations.**

By utilising FUSION IoT SIM cards, a robust Wi-Fi infrastructure can be established at various construction locations geographically.

This setup ensures stable internet connectivity, enabling seamless communication between different work areas and supporting quick information sharing between sites. With this solution, construction teams can access real-time plans and technical documents, improving efficiency and safety on the job.



## Customer Challenges

**Network Reliability:**

Ensuring a stable and continuous Wi-Fi connection at construction sites.

**High Availability:**

Maintaining reliable connectivity across multiple construction locations.

**Streamlining On-Site Processes:**

Facilitating smoother and more efficient workflows.

**Mobility:**

Adapting quickly to changing construction site locations.

## Solution Requirements

**All Networks in the UK:**

Ensure comprehensive coverage across all national networks.

**Coverage in Additional Countries:**

Provide extensive connectivity across Europe.

**Wi-Fi Hotspot Capability:**

Support for establishing Wi-Fi hotspots at construction sites.

**High Data Volume:**

Adequate data capacity to handle extensive usage.

## Solution Details

**Network:**

Single & Multi-Network SIM available.

**Data plans:**

We have a range of flexible data plans with options for multi-network and single-network SIMs as well as data pooling available for efficient usage across multiple devices and territories.

**Number of SIM cards:**

Ranging from a single SIM solution, to catering for SMEs and Enterprise alike. The portal allows provision and in-life management with no minimum requirement.

**Minimum contract duration:**

As required.

## Customer Benefits

**Reliable Wi-Fi on Construction Sites:**

Stable and efficient Wi-Fi connectivity for uninterrupted operations.

**Enhanced Efficiency:**

Faster and easier communication between work areas boosts productivity.

**Improved Safety:**

Real-time access to construction plans and technical documents enhances job safety and accuracy.

**Increased Employee Satisfaction:**

Reliable internet access contributes to a better working environment.

**Reduced Errors and Delays:**

Quick data exchange minimises mistakes and project delays.

## Ready to improve connectivity on your construction sites?

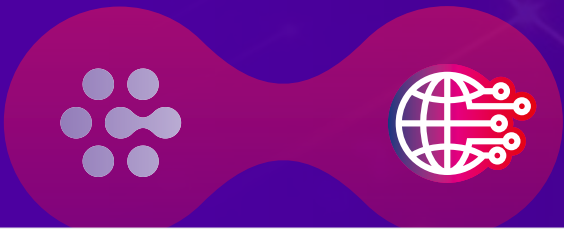
Contact us today to explore how FUSION IoT can deliver reliable Wi-Fi solutions, streamline operations, and enhance efficiency and safety across your projects.

[sales@gamma communications.nl](mailto:sales@gamma communications.nl)

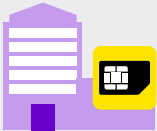
088 500 5010







Industry: Security & Safety Systems



## Smart Building: Lift Alarm Systems

**Providing reliable lift alarm systems is essential for ensuring the safety and compliance of modern buildings.**

Utilising FUSION IoT SIM cards, these systems allow individuals trapped in a lift to seek external assistance quickly. In the event of a lift outage or breakdown,

the system connects to a 24/7 emergency call centre, which then alerts the lift maintenance company.

With mandatory requirements for lift alarm systems, including functionality during power outages, this solution ensures customers are well-protected.



### Customer Challenges

**Independent Operation:**  
Maximum availability without reliance on other connections.

**Secure Real-Time Transmission:**  
Immediate and secure transfer of alarms, notifications, or messages.

**Multiple Communication Channels:**  
Requirements for data, SMS, and voice.

### Solution Requirements

**All Networks in the UK:**  
Comprehensive coverage across all UK networks.

**Compliance:**  
Complaint with BS EN 81-28 lift safety standards.

### Solution Details

**Network:**  
Single & Multi-Network SIM available.

**Data plans:**  
We have a range of flexible data plans with options for multi-network and single-network SIMs as well as data pooling available for efficient usage across multiple devices and territories.

**Number of SIM cards:**  
Ranging from a single SIM solution, to catering for SMEs and Enterprise alike. The portal allows provision and in-life management with no minimum requirement.

**Minimum contract duration:**  
As required.

### Customer Benefits

**Fail-Safe Alarm Transmission:**  
Reliable and continuous transmission of alarms and notifications.

**Compliance with Legal Requirements:** Adherence to mandatory regulations and standards.

**Reduced Liability and Incident Consequences:**  
Minimise risks and impacts of accidents.

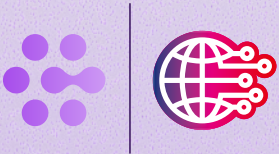
**Cost and Time Savings:**  
Efficient SIM card management and free administration portal.

**Improved Reputation and Customer Satisfaction:**  
Enhanced trust and satisfaction from building occupants.

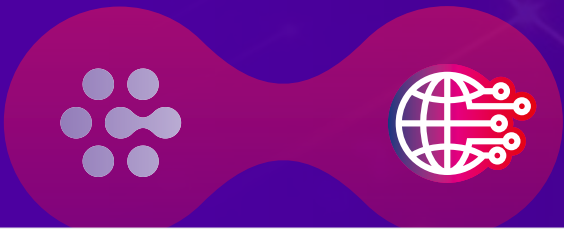
## Ready to ensure safety and compliance in your building?

Contact us today to learn how FUSION IoT's connectivity can power reliable elevator lift alarm systems, enhancing safety and helping meet all regulatory requirements.

**[sales@gammacommunications.nl](mailto:sales@gammacommunications.nl)**  
**088 500 5010**







Industry: Logistics

# Smart Logistics: Mobile Order Management



**Efficient delivery coordination is crucial in the logistics industry, where timely and accurate deliveries are essential to maintaining product quality and customer satisfaction.**

A robust fleet management system can greatly enhance this process. A mobile order management system can allow for seamless creation and editing of orders and delivery notes directly on the move.

By leveraging FUSION IoT SIM cards for data transmission, the system ensures real-time updates and communication, enabling drivers to receive the latest delivery information and route changes instantly. This level of connectivity simplifies and optimises route planning, ensuring that deliveries are executed as efficiently as possible, reducing delays, and improving overall service reliability.

## Customer Challenges

**Optimising fleet and order management while on the move.**

**Ensuring availability across Europe.**

**Simplifying and optimising route planning.**

**Efficiently coordinating orders and delivery notes.**

**Increasing transparency and oversight of the supply chain.**

## Solution Requirements

**Dynamic Pooling:**  
All SIM cards on the same tariff share a common data pool, allowing unused data from one SIM to be used by another.

**Europe-Wide Availability:**  
Seamless operation across all European countries.

**National Roaming:**  
Reliable connectivity by using multiple national networks.

**SIM Management Portal:**  
Centralised platform for easy SIM card management and monitoring.

## Solution Details

**Network:**  
Single & Multi-Network SIM available.

**Data plans:**  
We have a range of flexible data plans with options for multi-network and single-network SIMs as well as data pooling available for efficient usage across multiple devices and territories.

**Number of SIM cards:**  
Ranging from a single SIM solution, to catering for SMEs and Enterprise alike. The portal allows provision and in-life management with no minimum requirement.

**Minimum contract duration:**  
As required.

## Customer Benefits

**Efficient and Timely Mobile Order Processing:**  
Orders and delivery notes can be managed on the go, reducing delays and ensuring timely updates.

**Optimised Route Planning and Reduced Delivery Times:**  
Real-time data transmission enables constant route optimisation, minimising delivery times and improving overall efficiency.

**Reduced Administrative Effort through Automation:**  
Automated processes decrease the need for manual input, lowering administrative workload and allowing staff to focus on core tasks.

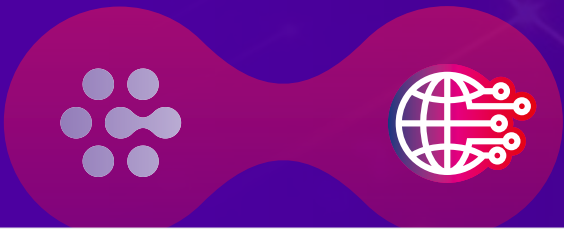
## Ready to transform your logistics operations?

Contact us today to discover how FUSION IoT can revolutionise your delivery process, boost efficiency, and elevate customer satisfaction.

**[sales@gamma communications.nl](mailto:sales@gamma communications.nl)**  
**088 500 5010**







Industry: Retail, Hospitality

## Smart Pay: Electronic Payment Processing Backup



**In today's fast-paced business environment, ensuring uninterrupted electronic payment processing is crucial.**

Integrating FUSION IoT SIM cards into payment terminals provides a robust backup solution, ensuring seamless transactions even if fixed connectivity experiences an outage.

This backup connectivity is essential for businesses across various sectors, including retail and hospitality, where continuous and reliable payment options are critical to customer satisfaction and operational efficiency.

### Customer Challenges

**Uninterrupted Payment Processing:**

Ensuring that payment transactions can proceed smoothly even during fixed network outages.

**Customer Convenience:**

Maintaining the ability for fast and easy payments without disruptions.

**Transaction Security:**

Guaranteeing the safety and integrity of transactions during connectivity issues.

**Business Continuity:**

Avoiding revenue loss and maintaining operations during network failures.

### Solution Requirements

**All Networks in the UK:**

Comprehensive coverage across all UK networks.

**Optimal Connectivity with National Roaming:**

Ensuring the best possible connection at all times.

**High Availability:**

Reliable and continuous operation to serve as a dependable backup.

### Solution Details

**Network:**

Single & Multi-Network SIM available.

**Data plans:**

We have a range of flexible data plans with options for multi-network and single-network SIMs as well as data pooling available for efficient usage across multiple devices and territories.

**Number of SIM cards:**

Ranging from a single SIM solution, to catering for SMEs and Enterprise alike. The portal allows provision and in-life management with no minimum requirement.

**Minimum contract duration:**

As required.

### Customer Benefits

**Continuous Payment Processing:**

Ensuring seamless transactions even if the primary network fails.

**Enhanced Customer Experience:**

Providing uninterrupted service and maintaining customer satisfaction.

**Improved Security:**

Ensuring secure transactions regardless of connectivity status.

**Operational Continuity:**

Minimising revenue loss and keeping business operations running smoothly.

## Ready to safeguard your payment processing system?

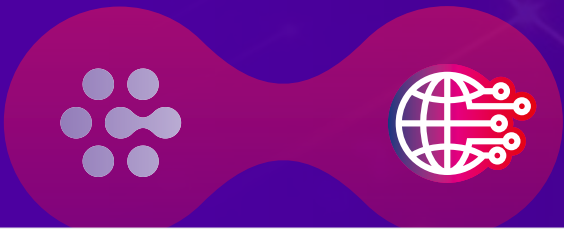
Contact us today to learn how FUSION IoT can provide reliable backup connectivity, ensuring continuous and secure electronic payment processing for your business.

[sales@gamma communications.nl](mailto:sales@gamma communications.nl)

088 500 5010







Industry: All businesses requiring resilient connectivity

# Connectivity Resiliency: 4G/5G Back-up and Connectivity Fast-Start

**In today's fast-paced business environment, maintaining uninterrupted connectivity is crucial.**

Any downtime can lead to significant operational disruptions, impacting productivity and customer satisfaction. FUSION IoT enables 4G/5G backup connectivity solutions that ensure your business remains online even if your primary fixed-line connection fails.

Additionally, our Fast Start solution provides immediate connectivity, allowing businesses to operate while waiting for fixed-line installation. Once the fixed connection is established, the 4G/5G solution seamlessly transitions to a backup role, ensuring a resilient and flexible connectivity strategy.



## Customer Challenges

**Connectivity Downtime:**  
Businesses cannot afford to lose connectivity, even temporarily, as it can disrupt operations and impact service delivery.

**Delays in Fixed-Line Installation:**  
Waiting for fixed-line broadband installation can delay business operations, especially in new setups or locations undergoing infrastructure upgrades.

**Managing Costs and Resources:**  
Businesses need cost-effective solutions that provide both primary and backup connectivity without requiring excessive investment in infrastructure.

## Solution Requirements

**4G/5G Back-up Connectivity:**  
A reliable and high-speed wireless backup connection that automatically activates if the primary fixed-line connection fails.

**Fast Start Connectivity:**  
Immediate 4G/5G connectivity to bridge the gap until fixed-line installation is completed, ensuring no operational delays.

**Nationwide and Regional Coverage:**  
Consistent 4G/5G coverage across all regions, ensures reliable backup connectivity wherever your business operates.

**Cost-Effective Implementation:**  
Affordable solutions that provide robust primary and backup connectivity without significant capital expenditure.

## Solution Details

**Network:**  
Single & Multi-Network SIM available.

**Data plans:**  
We have a range of flexible data plans with options for multi-network and single-network SIMs as well as data pooling available for efficient usage across multiple devices and territories.

**Number of SIM cards:**  
Ranging from a single SIM solution, to catering for SMEs and Enterprise alike. The portal allows provision and in-life management with no minimum requirement.

**Minimum contract duration:**  
As required.

## Customer Benefits

**Uninterrupted Operations:**  
With 4G/5G back-up connectivity, your business remains online even if the primary fixed-line connection fails, preventing costly downtime.

**Immediate Connectivity with Fast Start:**  
Get your business up and running instantly with 4G/5G connectivity while waiting for fixed-line installation, ensuring no delays in starting operations.

**Cost Efficiency:**  
Avoid the expense of downtime and delays with an affordable solution that provides both immediate and back-up connectivity.

**Don't let connectivity issues disrupt your business.**

FUSION IoT's 4G/5G back-up and Fast Start solutions ensure that your operations stay online, whether you're waiting for fixed-line installation or need a reliable back-up.

Contact us today to learn how we can keep your business connected, no matter what.

**sales@gamma communications.nl**  
**088 500 5010**

